

COMPONENT MANUFACTURER



## SCALE YOUR BUSINESS WITH INTEGRATED SOLUTIONS

**As a component manufacturer (CM), you enable better building.** As a partner to CMs across the country, MiTek does the same – from advanced design software and automated production equipment to innovative and integrated technologies that lead to a more profitable and stable future for your business.

MiTek solutions give CMs the efficiency to rise above labor and market challenges, so you're always ready to meet demand head-on. Let's lay the foundation to scale your success.

# SOFTWARE

Maximize productivity with industry-leading structural design and operations management software.

## ESTIMATING AND PLANNING

Designed to meet the needs of building materials suppliers, **MiTek® Supply** is a one-stop-shop 3D modeling and estimating application that generates a comprehensive and up-to-date Bill of Materials.

## MiTek® SUPPLY

## MANUFACTURING

Software designed to drive production performance has come to the plant. **MiTek® Production** provides a bird's-eye view of all the production activities going on in the plant, for walls and trusses.

## MiTek® PRODUCTION

## BUSINESS OPERATIONS

**MiTek® Management™** drives scheduling and tracking operations utilizing a simple dashboard in a single system for pricing, production, deliveries, and documentation.

## MiTek® MANAGEMENT™

**NEW!** **MiTek® Truss Validator™** A free tool for engineers and architects to confidently validate the feasibility of floor trusses in their designs.

## MiTek® TRUSS VALIDATOR™

## DESIGN

**MiTek® Structure** with Integrated Truss Design delivers the most powerful structural 3D modeling, editing, and estimating functionality in the industry. It's easy to learn and operate due to accessible tools, details, and properties.

## MiTek® STRUCTURE



*"I love the interaction of layout to engineering in [MiTek®] Structure. You can make changes instantly, which saves the designer time, and time is everything." - Stockton Truss*

**MiTek** | Home | Settings | About

### Validate the Feasibility of Floor Trusses with Confidence

**MiTek TRUSS VALIDATOR**

**INTRODUCING MI TEK TRUSS VALIDATOR™**  
A free tool for engineers and architects to confidently validate the feasibility of floor trusses manufactured using MiTek's industry-leading solutions.

**INSTRUCTIONS**  
To begin, select your project parameters and press "Validate Truss" to verify the feasibility of a floor truss. Then click "Detailed Report" for a report to be emailed and sent to your e-mail for you to share with your team.

Functionality of this tool is limited to clear span trusses and uniform loading at this time. The MiTek Truss Validator provides feasibility guidance as a starting point for truss design. MiTek can help find Component Manufacturers in your area to continue your design process.

Help | FAQ | Help Video

**Building Code**  
2018-03-01-IBC-1608

**Physical Description**  
Span (Feet) \* | Depth (Inches) \* | Spacing (Inches) \* | Lumber Species \*  
Select | Select | Select | SPF

**Deflection**  
Risks | Total Load Deflection Limit  
Live Load(L/240) | Total Load(L/240) | Live Load(L/180) | Total Load(L/180) | N/A

**Uniform Loading (Load)**  
Top Chord Live Load | Bottom Chord Live Load | Bottom Chord Dead Load  
Select | Select | Select

Validate Floor Truss



**TRUSS  
VALIDATOR**

# ENGINEERED PRODUCTS

Access a full range of engineered components to deliver solutions that transform how your customers build.

## FEATURED OFFERINGS



### Posi-Strut® Metal Web

Provide a more space-efficient solution for shallow-depth floors, offering increased utility access and design continuity.

### Hardy HFX Shear Panel

Optimize your wall system with a cost-effective prefabricated shear wall panel that enables narrower walls and larger openings.

**Fire Wall Hanger** The industry's most labor-saving solution for attaching floor framing to 2-hour fire-rated walls in wood frame construction.



## COMPLETE INTEGRATION

Get the **MatchPoint® DirectDrive™** System for its customizable operation of multiple MiTek machines for unparalleled efficiency and speed.

- Ranger™ Retrieval System
- MatchPoint® BLADE II™ Saw
- Component Delivery System
- Wizard PDS®



# AUTOMATED SOLUTIONS

Increase plant efficiency and reduce labor requirements with integrated automation solutions.

## FEATURED OFFERINGS



**POWERED BY SIEMENS**

**Hornet II™ Saw** A precision cutting and labeling upcut saw with software-driven optimizations that reduce waste and enhance productivity.



**Cyber A/T®** A versatile, computer-controlled component saw with fully powered features and options for high-speed batch-cutting.



**RailRider Pro®** A high-volume throughput in floor truss assembly, ensuring a full plate embedment each pass.



**RoofTracker III™** A high-volume roof truss roller gantry that presses the top and bottom plates in a single pass.



**MACHINERY  
SPECS**

# SERVICES

Expand your capabilities in design, estimating, and manufacturing with skilled services.

**Dedicated Services** Provides university-educated professionals to handle your technical work and fuel your business growth.

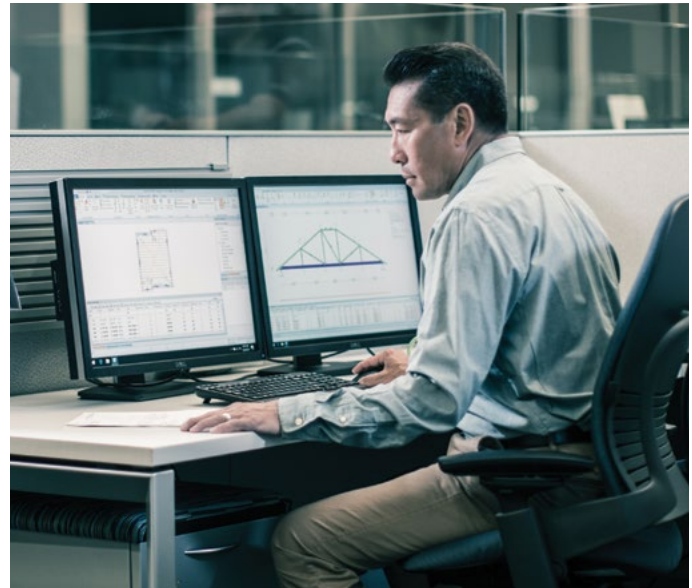
→ **Component Estimating, Production-Ready Designs & Optimization**

- Floors, Roofs, Walls
- Single & Multi-Family

→ **Take-Offs**

- Whole House
- Lumber
- Hardware
- Drywall, Flooring & Cabinets

→ **Kitchen & Bath Design**



**Plant Optimization Service** Our Solutions Architects provide a tailored plant layout for optimal efficiency, focusing on minimizing waste and maximizing labor productivity using 3D designs.

**Optimized Design Support** Provides a comprehensive analysis of your wood-framed building design to ensure the most efficient build and value for all partners involved in the project.

## CUSTOMER TESTIMONIALS



*"Our bottleneck was in design, and we weren't sure what to do. MiTek Services increased our capacity greatly." - Christensen Lumber*



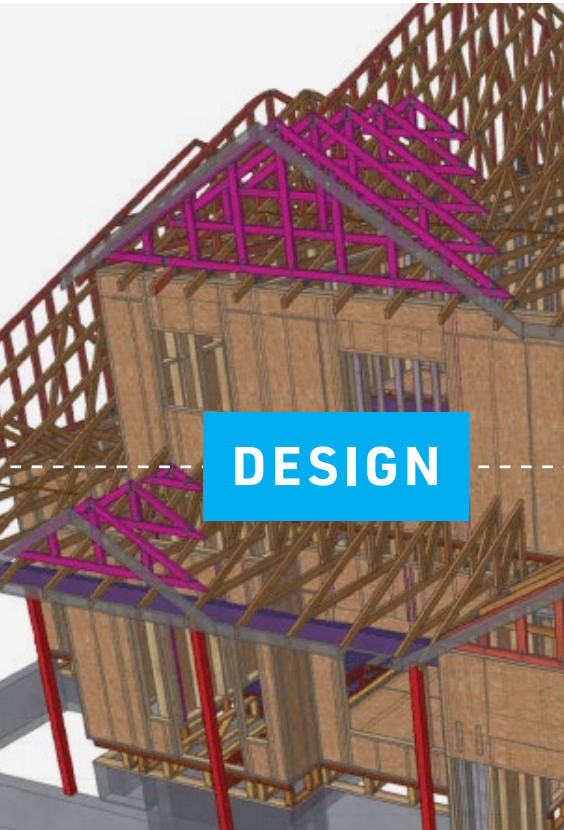
*"Without MiTek Services, we wouldn't have the capacity to be doing the volume of work that we've been doing." - Desert Truss*



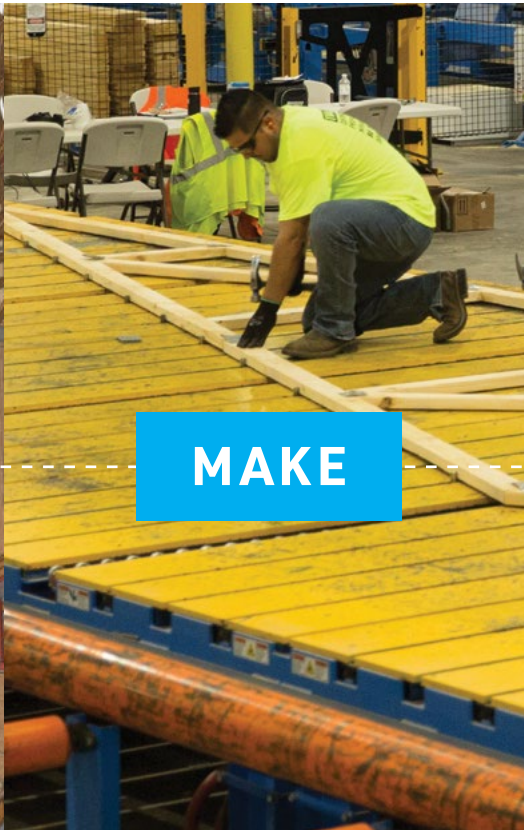
*"Partnering with MiTek Services is quicker and easier than hiring designers and estimators independently." - U.S. LBM*



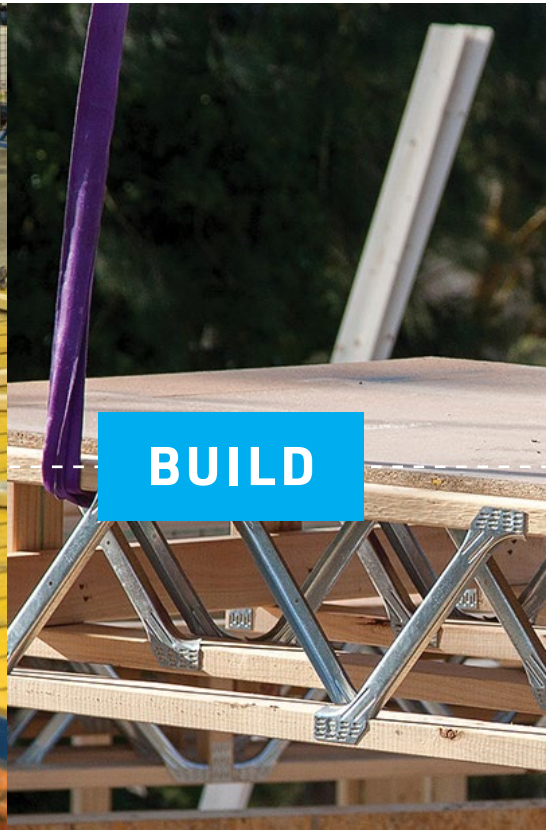
**VIEW FULL TESTIMONIALS**



**DESIGN**



**MAKE**



**BUILD**

## **UNLOCK THE POWER OF DESIGN-MAKE-BUILD™**

Maximize production and fuel your growth with MiTek's integrated off-site technologies.

### **DESIGN**

Enhance your team's efficiency and scale operations with our powerful design and modeling software, featuring highly configurable automation options.

### **MAKE**

Streamline your production using our comprehensive selection of cutting, assembling, and material handling tools and software to enhance your entire workflow.

### **BUILD**

Help your customers build better quality homes more efficiently and safely with off-site construction solutions.

[MII.COM/CM](https://www.mitek.com/cm)